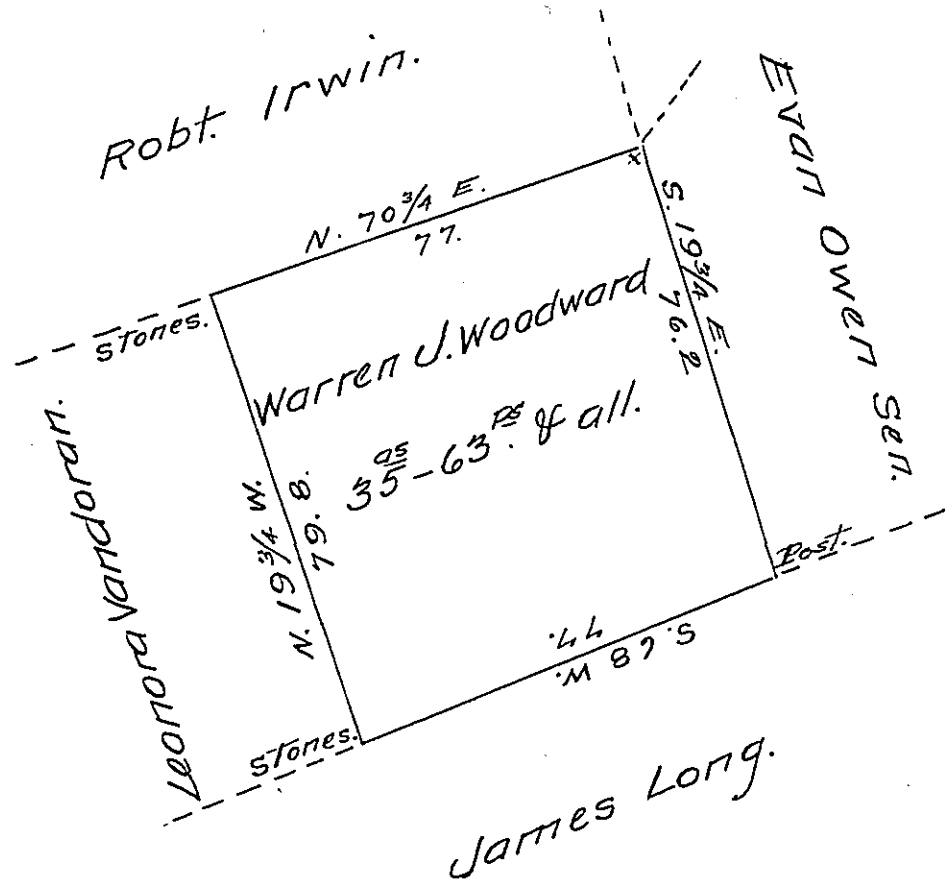


W



A draft of a tract improved land situate in
 in Nescopeck-Luzerne County adjoining Evan Owen
 Sen. James Long & others, containing thirty five
 acres and sixty three perches & allowance of six
 pr. cent &c. Surveyed the above described tract
 of land the 13th day of December 1852 for War-
 ren J. Woodward by virtue of his Warrant dated
 2^d day of December 1852.

Jacob Allabach

Surv^r of Luzerne Co.

To J. Porter Brawley Esq. }
 Surveyor General }

IN TESTIMONY that the above is a copy of the original remaining on file in
 the Department of Internal Affairs of Pennsylvania, made
 conformably to an Act of Assembly approved the 16th day of
 February 1833, I have hereunto set my hand and caused
 the Seal of said Department to be affixed at Harrisburg,
 this eleventh day of June 1907.

Henry Houck
 Secretary of Internal Affairs.

Alexander Work